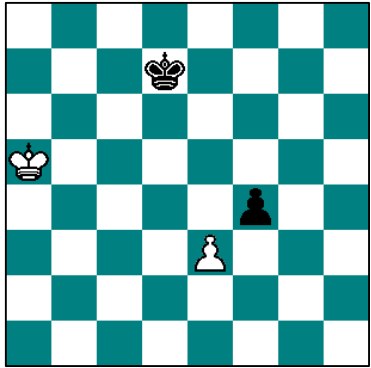
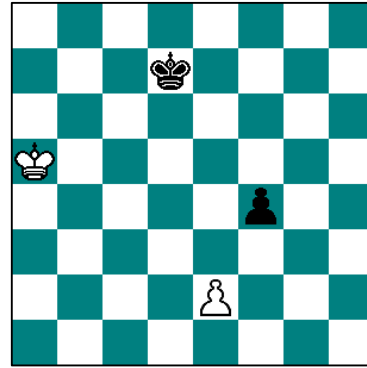


'En passant' – worksheet – lect.: 6

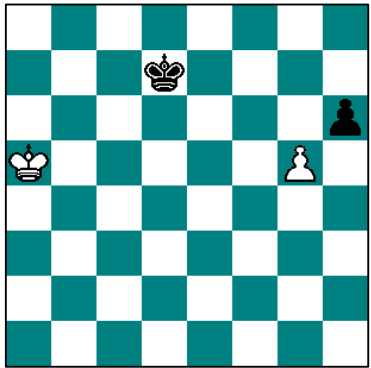
Solve these exercises individually or in pairs. Draw an arrow from the piece that should be moved, unto the square it goes to, or write your answers on the lines. The results will be assessed by the group afterwards.



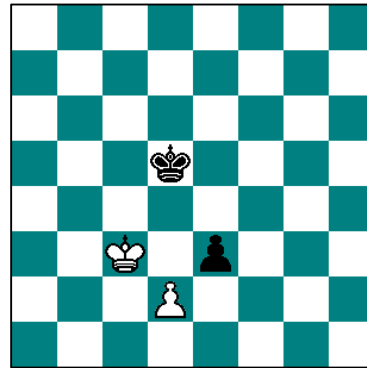
Exercise 1:
White plays e4
– can black capture 'en passant'?



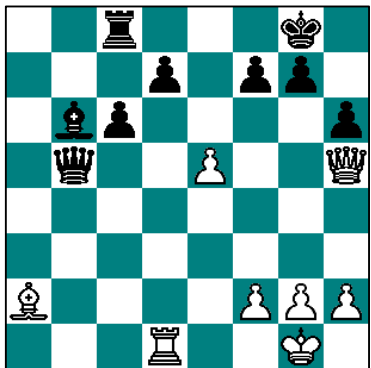
Exercise 2:
White plays e4
– can black capture 'en passant'?



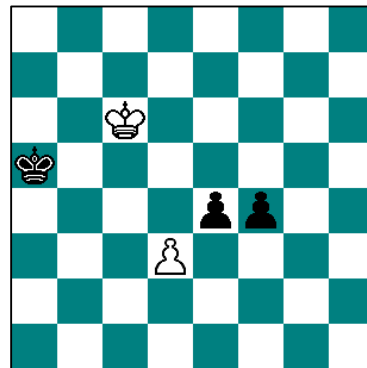
Exercise 3:
White plays g6
– can black capture 'en passant'?



Exercise 4:
White plays d4 – what about 'en passant'?



Exercise 5:
Black plays d5
– what about 'en passant'? Is it a good move?



Exercise 6:
White takes the pawn on e4 – can black capture 'en passant'?