

# 1<sup>st</sup> Lecture

## THE GAME AND ITS HISTORY

- 4 Historic Introduction
- 4 The Game
- 4 The Board and the Pieces
- 4 Pawn Chess

---

<b>Historic Introduction</b>	The modern chess game was first introduced around 600 A.D. in India where it was called Chaturanga.
<b>Chaturanga</b>	Chaturanga used the following pieces: Ruler (= King), Adviser (= Queen), Elephants (= Rooks), Chariots (= Bishops), Cavalry (= Knights) and Soldiers on foot (= Pawns).
<b>Myths</b>	Many myths surround the game's origin. Legend has it, for instance, that an Indian wise man created it as a recreational activity for his master. As a reward he asked for one corn of wheat for the first square on the board, two for the second, four for the third, eight for the fourth, sixteen for the fifth and so forth until the 64th square. His reward was impossible to pay out, which can be seen by doing the calculation!
<b>Chess in Namibia</b>	The first Namibian chess club was formed in 1933 during the apartheid, so it was not open to everyone. In 1991 The Namibian Chess Federation was founded, making the sport open to all. In 1994 Namibia sent a national team to the Olympiads, for the first time.

<b>Garry Kasparov</b>	<p>Nowadays chess is most popular in USA and in Russia.</p> <p>Throughout history Russia has been the dominant force in chess, and today's strongest player Garry Kasparov (ret. 2005) is from Russia.</p>
<b>The game</b>	<p>The game of chess consists of proud traditions and is a fascinating game that combines science and art into one.</p>
<b>The board</b>	<p>The game is a battle between the black and the white armies, who take turns in moving their pieces. The winner is the one who checkmates his opponent's king.</p>
<b>The pieces</b>	<p>"Point and explain" the board! Discuss the black and white squares, 64 in total, the eight ranks from 1 – 8, the eight files from a – h, the names of the squares and so forth.</p>
<b>The movement of the Pieces</b>	<p>Put up the pieces on the board, one by one, naming them and giving their position. For example, "The white king on e1".</p> <p>Continue until you reach the starting position. Then divide the board into the queen wing and the king wing.</p>
<b>The value of the pieces</b>	<p>Clear the board and explain the movement of the pieces and their value. This is most comprehensible in the following order: King – rook – bishop – queen – knight.</p> <p>Write up the value of the pieces – in the amount of pawns! – on the whiteboard:</p>

King = infinite

Queen = 9 pawns

Rook = 5 pawns

Bishop = 3 pawns

Knight = 3 pawns

Pawn = 1

### **The special pawn**

Finally discuss the pawn, which needs a special presentation.

#### **Remarks about the pawn:**

- The pawn can only go forward.
- In the first move you can choose to move the pawn one or two squares forward.
- The pawn moves straight, but captures (the opponent's pieces) diagonally
- If the pawn reaches the eighth or the first rank it can be promoted to another piece, preferably an officer, but excluding the king.
- Discuss shortly the "en passant"-rule – it will be discussed further (in the sixth lesson).

### **Castling**

Castling is a special move, with the aim of bringing the king into safety. It is possible to castle short and long. When castling short the king moves from the e-file to the g-file and the rook from the h-file to the f-file. When castling long the king moves from the e-file to the c-file and the rook from the a-file to the d-file. Note that both of these are considered one move.

## The rules of castling

For the castling move to be legal, the following requirements must be met:

- There can be no pieces standing between the rook and the king.
- The king must not be in check.
- The king cannot castle over an attacked square – however, the rook can!
- Castling is not allowed if either the king or the rook have previously been moved.

## Philidor

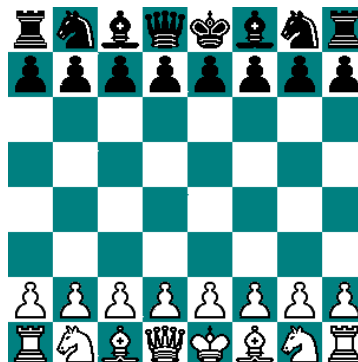
A famous French chess player from the 18<sup>th</sup> century, by the name of Philidor, once remarked that “the pawns are souls of chess!”

There is a certain truth in this, as the pawns can often prove to be the deciding factor of a game. Therefore, controlling the pawns is vital.

## Pawn chess

A fun way to getting to know the pawns is playing Pawn chess, which is chess with only the pawns on the board.

Diagram 1.1



---

	<p>Diagram 1.1 shows the starting positions for a normal game of chess. In pawn chess all officers – including the king! – are removed.</p>
<b>The rules</b>	<p><b>The rules of pawn chess are as follows:</b></p> <ul style="list-style-type: none"><li>- Draw lots for the colours</li><li>- White makes the first moves, like in normal chess, and thereafter black and white make alternate moves.</li><li>- The rules of a released piece apply; the move is complete only when the piece is released on a new square.</li><li>- The game is won when all the opponent's pawns have been eaten, or if the final rank is reached with one of the pawns.</li></ul>
<b>The next lesson</b>	<p>The next lesson discusses the concepts of mate and stalemate.</p>