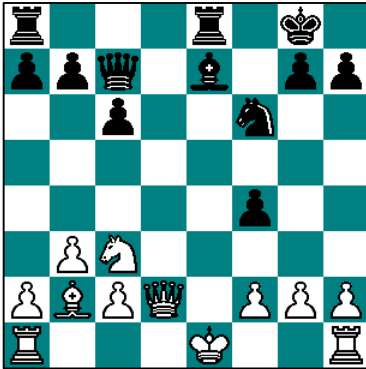


# 'Uncovered check & overload'

## worksheet – lect.: 16

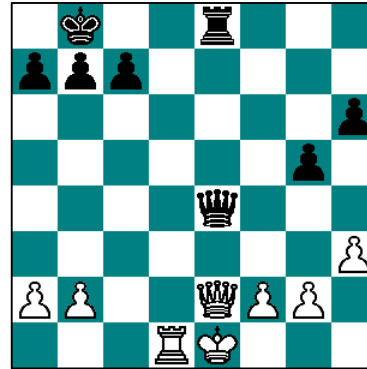
Solve the exercises individually or in pairs. Right your solution on the line. Afterwards, the group will assess the answers together.



**Exercise 1:**

Black to move and win, how?

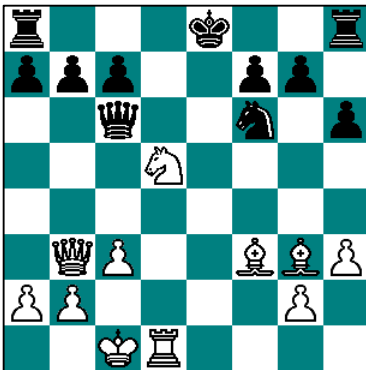
\_\_\_\_\_



**Exercise 2:**

White to move and win, how?

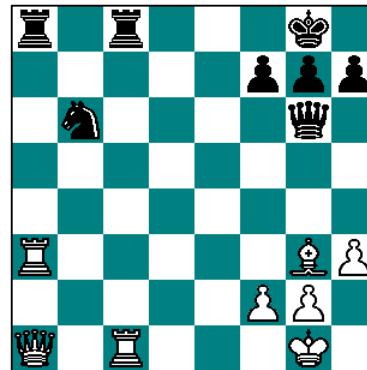
\_\_\_\_\_



**Exercise 3:**

White to move and win, how?

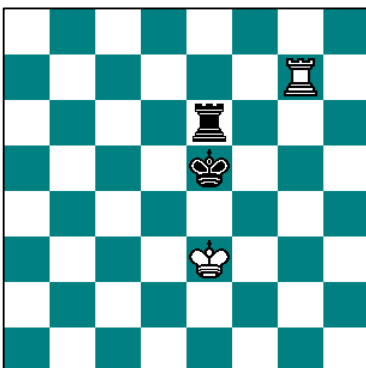
\_\_\_\_\_



**Exercise 4:**

White to move and win, how?

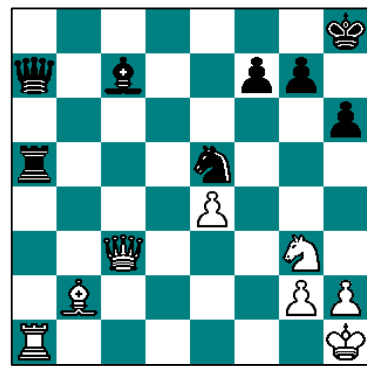
\_\_\_\_\_



**Exercise 5:**

Black to move and win, how?

\_\_\_\_\_



**Exercise 6:**

White to move and win, how?

\_\_\_\_\_